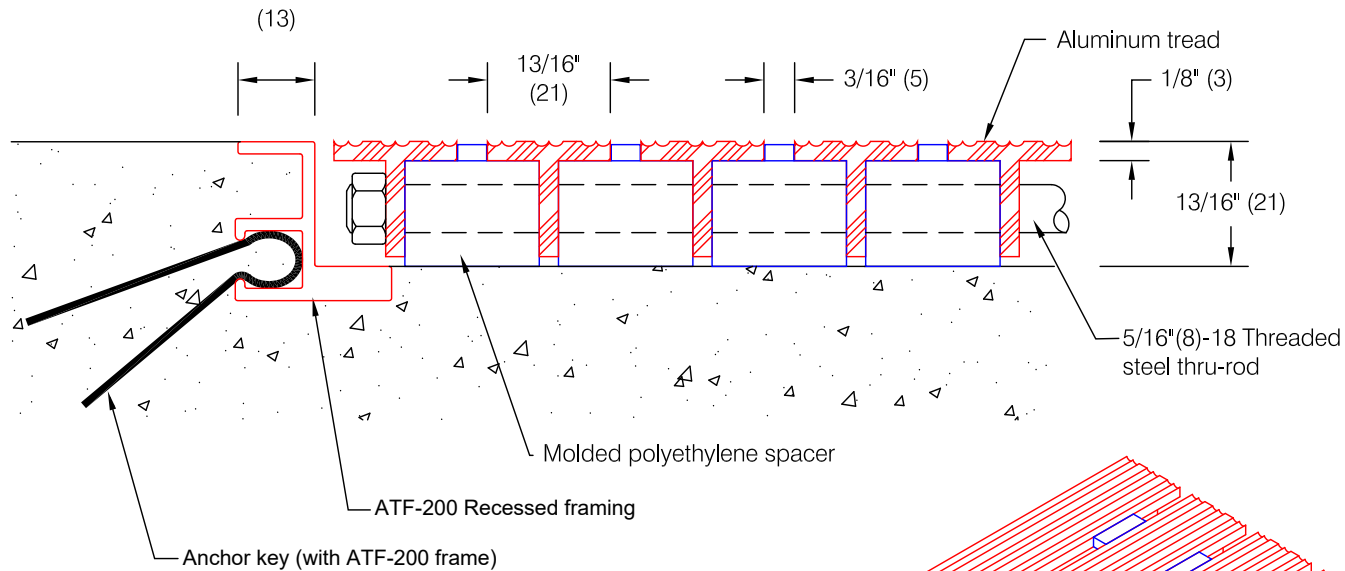
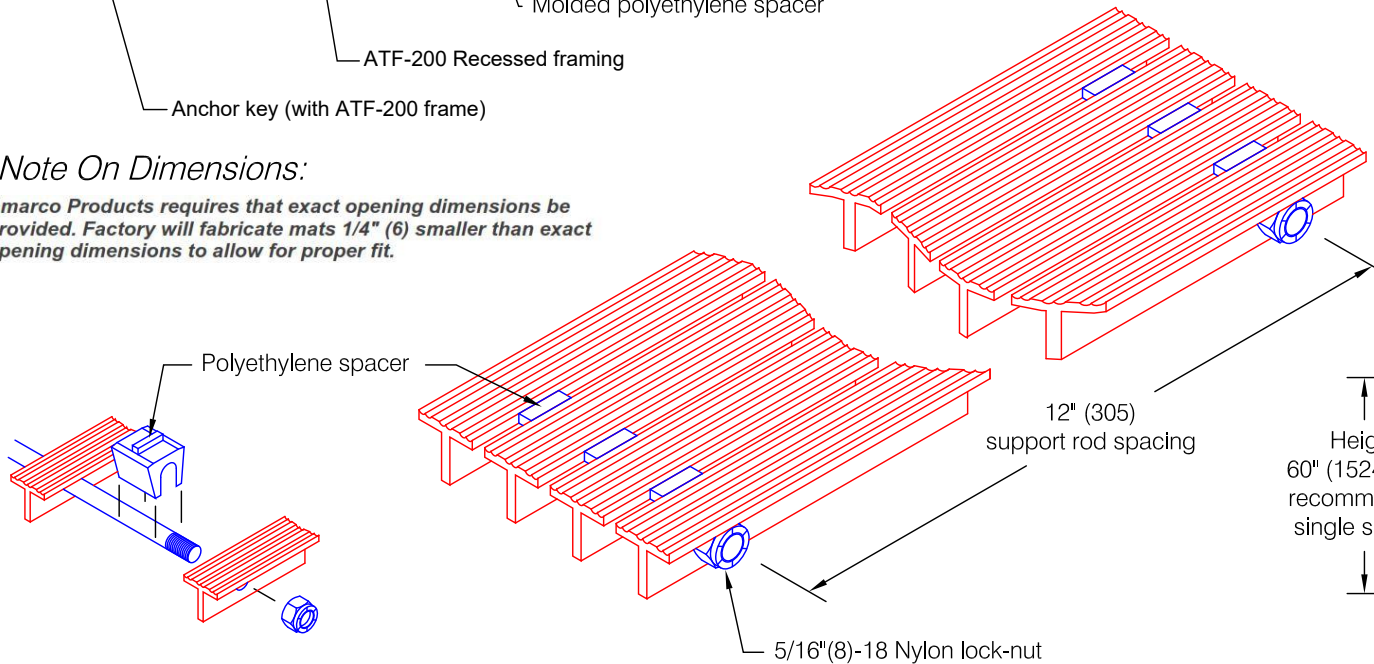


## G-200A - 13/16" Aluminum Foot Grille



### Note On Dimensions:

\* Amarco Products requires that exact opening dimensions be provided. Factory will fabricate mats 1/4" (6) smaller than exact opening dimensions to allow for proper fit.



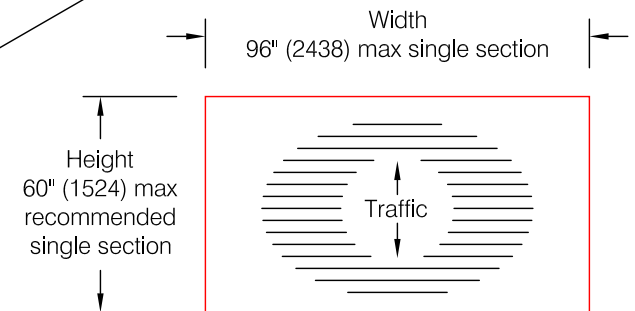
### Features:

- Extruded aluminum treads, 1/8" (3), alloy 6063-T5
- Molded polyethylene spacer to reduce clatter and eliminate metal contact with floor
- Single section width to 96" (2438)
- Static Coefficient of Friction (ASTM D-2047-82)  
Dry: 0.45, Wet: 0.74

### Finishes:

- Aluminum tread:  
Mill finish (standard) #405
- Spacer:  
Molded polyethylene white #10

### Sectioning information:



\* Mats over 28 square feet may require sectioning as determined by the factory

Amarco Products reserves the right to discontinue a design or modify an existing design without prior notice

|             |             |          |
|-------------|-------------|----------|
| Customer :  | Project :   | ED.34.0c |
| Architect : | Sales Rep : |          |