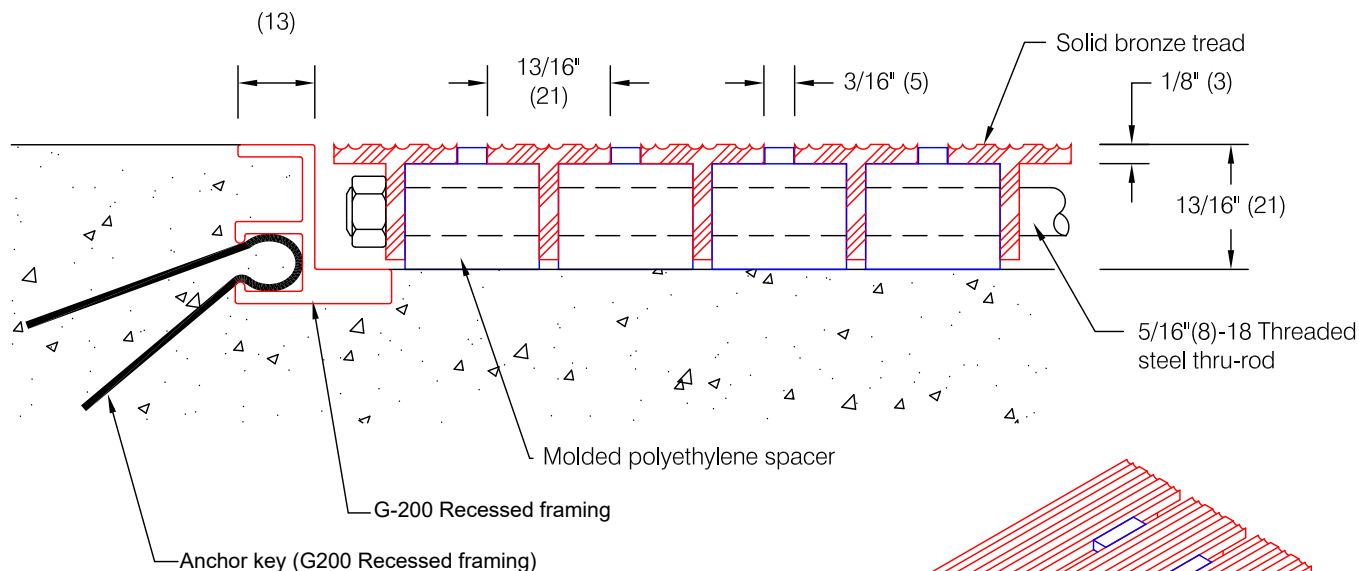
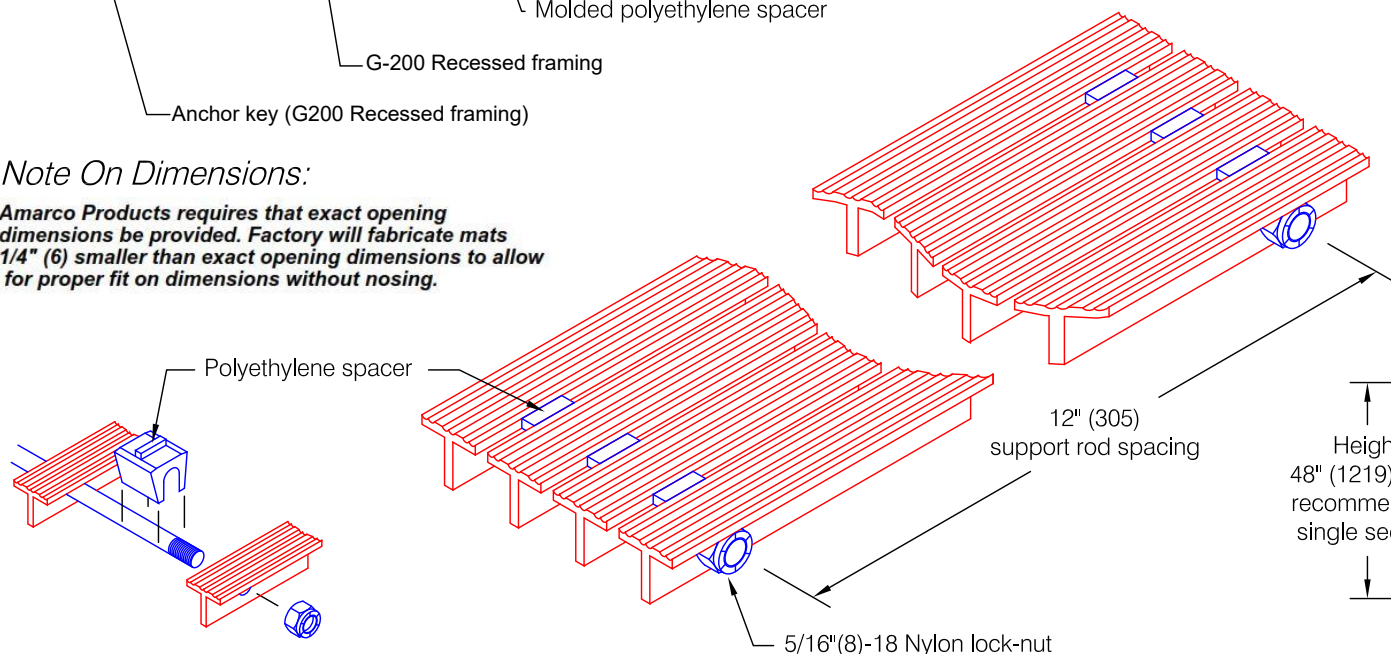


G-200B - 13/16" Aluminum Foot Grille



Note On Dimensions:

- * **Amarco Products requires that exact opening dimensions be provided. Factory will fabricate mats 1/4" (6) smaller than exact opening dimensions to allow for proper fit on dimensions without nosing.**



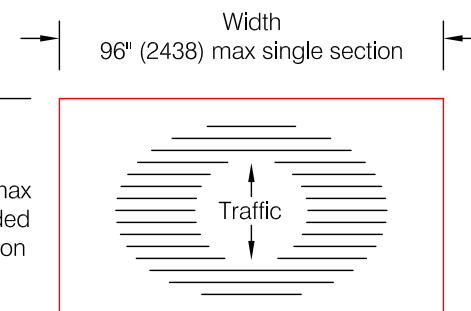
Features:

- Extruded bronze treads, 1/8" (3), alloy 385, mill finish
- Molded polyethylene spacer to reduce clatter and eliminate metal contact with floor
- Single section width to 96" (2438)
- Static Coefficient of Friction (ASTM D-2047-82)
Dry: 0.45, Wet: 0.74

Finishes:

- Solid bronze tread:
Mill finish (standard) #405
Satin finish #444
- Spacer:
Molded polyethylene white #10

Sectioning information:



* **Mats over 28 square feet may require sectioning as determined by the factory**

Amarco Products reserves the right to discontinue a design or modify an existing design without prior notice

Customer :	Project :	
Architect :	Sales Rep :	